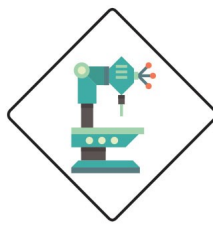


# All Geared Radial Drill Machine RD50A Series



## Salient Features

- ▶ Rigid and close grain casting of base, column, arm and drilling.
- ▶ Major design feature includes a large column base and ribbed arm to with stand heavy load in operation.
- ▶ Swivel axis and travel axis feature extremely smooth operatio.
- ▶ The arm, lifting gears run in oil bath for maximum reliability and minimum wear.
- ▶ The main spindle run on precision bearings and all gears of gear box are lubricated reliably via oil pump.
- ▶ All gears and spindle are made from chrome- nickel steel.
- ▶ Advanced column swivel design with optimized clamping features maximum rigidity.
- ▶ The quill features guided counterweights for easy handling and increased safety.
- ▶ Powerful coolant system with coolant reservoir integrated into the machine base.
- ▶ Hydraulic clamping is provided as an additional feature, if required.



**RD50A**



The radial drill press is more flexible being able to drill into larger diameter objects due to its larger swing distance (related to the column to drill axis distance)

## SPECIFICATION

Type	RD40A	RD50A
Drilling Capacity in Mild Steel	40 mm	50 mm
Maximum Drilling Radius	1050 mm	1300 mm
Max. Distance between Spindle and Base	1000 mm	1250 mm
Spindle Travel	180 mm	250 mm
No. of Spindle Speeds	6	12
Range of Spindle Speeds RPM	90-900	45-1000
No. of Spindle Feeds	3	6
The range of Spindle Feeds mm/ rev.	0.1-0.4	0.12-1.25
Main Drive Motor	3 HP	5 HP
Elevating Motor	2 HP	3 HP