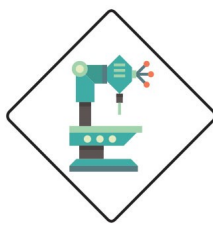


All Geared Radial Drill Machine RD Series



Salient Features

- ▶ Parts of the machine are made with high strength cast and alloy steel materials.
- ▶ Base plate and Box-table is provided with coupler grinding.
- ▶ Outside pillar is made by centrifugal casting, grinding and lapping.
- ▶ Arm is also flame hardening & grinding.
- ▶ Gear box gears are made from 20mnCr5 materials with hardened and ground for minimum wear and tear.
- ▶ All parts are precisely machined by using various jigs and fixtures.
- ▶ Easy and convenient with wide range of 9 spindle speed for drilling,
- ▶ Reaming, tapping & boring operation.
- ▶ Automatic spindle feed with precision depth stop.
- ▶ Manual feeds for coarse and smooth spindle reversal.
- ▶ Main spindle shaft is made of alloy steel EN series with 6 slots hardened & grinding.
- ▶ Double column construction for rigidity and effortless centering & finishing is achieved by lapping and grinding.



SPECIFICATION

Model	RD40	RD50	RD65
Drilling capacity (mm)	40	50	65
Drilling capacity in Cast- IRON (C.I.)	46	56	70
Tapping in steel	27	42	50
Spindle travel (mm)	150	250	300
Spindle Taper	MT-4	MT-4	MT-5
No. of spindle speed / Range	9 (50-805)	9 (50-805)	9 (50-805)
Range of Power Feed	0.115	0.115	0.115
Optional Feed 6	0.13-1.10	0.13-1.10	0.13-1.10
Column Diameter (mm)	228	280	330
Max / Min Dist. Spindle center to Col. Center	1160 / 550	1325 / 615	1700/700
Horizontal Movement of Drilling Head	510	710	1000
Max / Min Dist. Spindle Nose to Base plate	1030 / 450	1080 / 480	1120/460
Vertical Movement Of Radial Arm	580	600	660
Working surface of table (mm)	560 X 460	560 X 460	400
Height of Box Table	400	400	1400x850
Working surface of base plate (mm)	800 X 670	1020 X 800	210
Height of the Base Plate	170	190	5/1440
Drilling Head motor (HP/RPM)	2 / 1440	3 / 1440	3/1440
Elevator Motor (HP/RPM)	1 / 1440	2 / 1440	2050 x 990
Base plate dimension (L x W)	1330 X 820	1680 X 930	2440
Total Height of the Machine (Approx)	2250	2360	3100 Kg.
Weight (Approx) kg.	1750	2350	2950