

CNC PCB Router / Drilling Machine

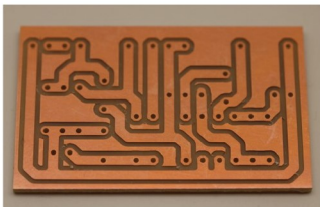
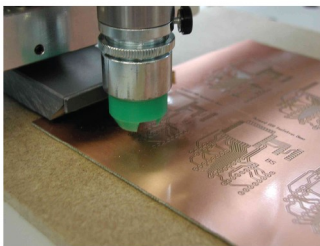
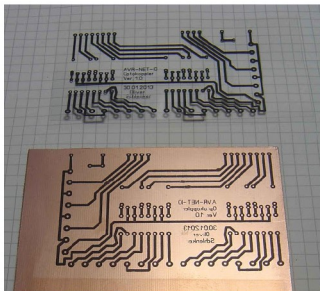


SPECIFICATION



Parameters	Description
Ball	Pitch = 5mm (All 3 axes i.e. X Y Z). Dia = 16 mm
Machine Structure and material of Construction	Cast Steel.
Machine Slides (XYZ)	Precision Linear Guideways.
Axes Motor (XYZ)	Stepper Motor NEMA23, microstepping, 19kg-cm, 1.8deg, 2.8 Amp, bi-phase motors.
Spindle Motor	0.8Kw , 25000RPM, Air-cooled, Runnout=20 microns.
Axes Motor Drive Electronics (XYZ)	Noiseless Microstepping drive . Operating Voltage = 24V DC
Home Position Sensors	Ultra-precision proximity inductive sensors with repeatability of 0.01 mm & response time of 0.1 secs . Type : PNP-NO. Operating Voltage : 24V DC
Min drill Hole size	0.3 mm
Min cutting space	0.1 mm
XYZ Resolution	0.006 mm
Files Compatible	Gerber, Excellon generated from any PCB CAD Software
CAM Software	Built-in CAM software to generate files for isolation routing and drilling
PC Connectivity	USB connectivity
Graphical User Interface Software for machine Control & Manufacturing	Provided
Operating System requirements	Window 7 64-bit or 32 - bit or Linux (Ubuntu)
Supports G Codes	Provided
Operations Supported	Engraving, Drilling, Milling, Trimming, Profiling, Routing, Pocketing, Isolation Routing etc.
Accessories	Brush, Allen key set, Adhesive tape, copper clad board, Nose plier, Power Cord, USB cable, Tool set (Drill bits, Router bits, Engraving bits)
Multi-Purpose Heavy Duty Desktop CNC Machine.	Application involve PCB prototyping, Enclosure prototyping etc.
Warping Compensation or Automatic Tool Height Control System	The said workpiece is scanned from top for surface non-uniformities and flatness of copper clad board. For precision engraving, height is an extremely critical and important parameter to be controlled. As per the scanned topography, the height of the tool is automatically compensated in run-time. This gives precision engraving performance.
Power Requirement	Single phase AC 230V, 50 Hz.
Machine dimensions	500 x 400 x 300 (L mm x B mm x Z mm).
Working area	300 x 250 x 60 (X mm x Y mm x Z mm).
Toolset	Engraving V-bits 60deg/30 deg/45 deg, End-mills, Drills.
Warranty	1 year
Weight	90 kg
Maximum PCB Layers	Dual layer
Engraving parameters	0.2 mm

Application



ADDITIVE MANUFACTURING / PROTOTYPING 3D PRINTERS

