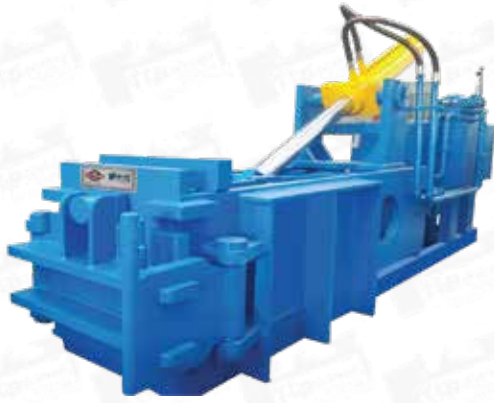


Double Action Scrap Baling Press



Front Eject System



Top Eject System



SPECIFICATION

Model	PDHB 8"x15"	PDHB 16"x16"	PDHB 16"x20"	PDHB 18"x18"	PDHB 18"x24"	PDHB 20"x20"
BALING CHAMBER	22"x15"x26" (H X W X L) (2 CYL)	25"x16"x52" (H X W X L) (4 CYL)	25"x20"x52" (H X W X L) (4 CYL)	25"x18"x52" (H X W X L) (4 CYL)	27"x24"x52" (H X W X L) (4 CYL)	29"x20"x52" (HXWXL)
BALE SIZE	8"x15" (H X W)	16"x16" (H X W)	16"x20" (H X W)	18"x18" (H X W)	18"x24" (H X W)	20" X 20" (H X W)
ELECTRIC MOTOR	7.5 H.P 3 PHASE 1440 RPM	15 H.P 3 PHASE 1440 RPM	15 H.P 3 PHASE 1440 RPM	15 H.P 3 PHASE 1440 RPM	20 H.P 3 PHASE 1440 RPM	20 H.P 3 PHASE 1440 RPM
BODY	FABRICATED 25 MM	FABRICATED 45 MM	FABRICATED 45 MM	FABRICATED 45 MM	FABRICATED 40 MM	FABRICATE (45 + 12 MM)
HARD LINER PLATES	PROVIDED (C 45) 10 MM	PROVIDED (C 45)	PROVIDED (C 45) 12 MM	PROVIDED (C 45)	PROVIDED (C 45) 12 MM	PROVIDED
OIL DRIVE	VANE PUMP SYSTEMS	DOUBLE PUMP SYSTEMS	DOUBLE PUMP SYSTEMS	DOUBLE PUMP SYSTEMS	DOUBLE PUMP SYSTEMS	VAN PUMP SYSTEMS
WORKING LIQUID	HYDRO/ENCLO-68 (NOT IN OUR SCOPE)	HYDRO/ENCLO-68 (NOT IN OUR SCOPE)	HYDRO/ENCLO-68 (NOT IN OUR SCOPE)	HYDRO/ENCLO-68 (NOT IN OUR SCOPE)	HYDRO/ENCLO-68 (NOT IN OUR SCOPE)	HYDRO/ENCLO-68 (NOT IN OUR SCOPE)
NO OF CYLINDER	2 NOS	4 NOS	4 NOS	4 NOS	4 NOS	2 Nos./4Nos for auto eject
FORCE ON LID	30 TONS (125 BORE X 140 OD X 80 RAM)	40 TONS (140 BORE X 170 OD X 90 RAM)	40 TONS (140 BORE X 170 OD X 90 RAM)	40 TONS (140 BORE X 170 OD X 90 RAM)	40 TONS (140 BORE X 170 OD X 90 RAM)	40 TONS
FORCE ON MAIN CYLINDER	50 TONS (170 BORE X 205 OD X 110 RAM)	80 TONS (200 BORE X 245 OD X 135 RAM)	80 TONS (200 BORE X 245 OD X 135 RAM)	80 TONS (200 BORE X 245 OD X 135 RAM)	100 TONS (220 BORE X 270 OD X 150 RAM)	100 TONS
DOOR LOCK CYLINDER	—	12 TON (100 BORE X 115 OD X 65 RAM)	12 TON (100 BORE X 115 OD X 65 RAM)	12 TON (100 BORE X 115 OD X 65 RAM)	12 TON (100 BORE X 115 OD X 65 RAM)	—
BALE EJECT CYLINDER	—	12 TON (100 BORE X 115 OD X 65 RAM)	12 TON (100 BORE X 115 OD X 65 RAM)	12 TON (100 BORE X 115 OD X 65 RAM)	12 TON (100 BORE X 115 OD X 65 RAM)	—
WORKING PRESSURE	2000 PSI	3000 PSI	3000 PSI	3000 PSI	3000 PSI	3000 PSI
BALE EJECT	BY CYLINDER	BY CYLINDER	BY CYLINDER	BY CYLINDER	BY CYLINDER	BY CYLINDER
DOOR LOCK	BY MANUAL	BY CYLINDER	BY CYLINDER	BY CYLINDER	BY CYLINDER	By MANUAL / HYD FOR AUTO MODEL
STARTER	PROVIDED	PROVIDED	OPTIONAL	PROVIDED	OPTIONAL	OPTIONAL
IDLE CYCLE TIME	30 -35 SECONDS (APPROX)	60 -65 SECONDS (APPROX)	60 -65 SECONDS (APPROX)	60 -65 SECONDS (APPROX)	60 -65 SECONDS (APPROX)	50 -55 SECONDS (APPROX)
WEIGHT OF THE BALE	MS 10 TO 20 KGS.	LIGHT COMMERCIAL 30 TO 40 KG.	LIGHT COMMERCIAL 40 TO 50 KG	LIGHT COMMERCIAL 35 TO 40 KG.	CAR BODY 50 TO 60 KGS.	Light Commercial 70 KG.
OIL TANK CAPACITY	200 LTS	400 LTS	400 LTS	400 LTS	500 LTS	500 LTS
OPERATION OF THE MACHINE	MANUAL 2 THROUGH LEVERS	MANUAL 3 THROUGH LEVERS	MANUAL 3 THROUGH LEVERS	MANUAL 3 THROUGH LEVERS	MANUAL 3 THROUGH LEVERS	MANUAL THROUGH LEVERS

Application

